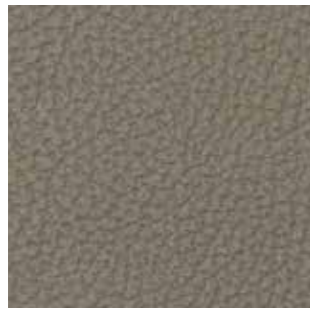


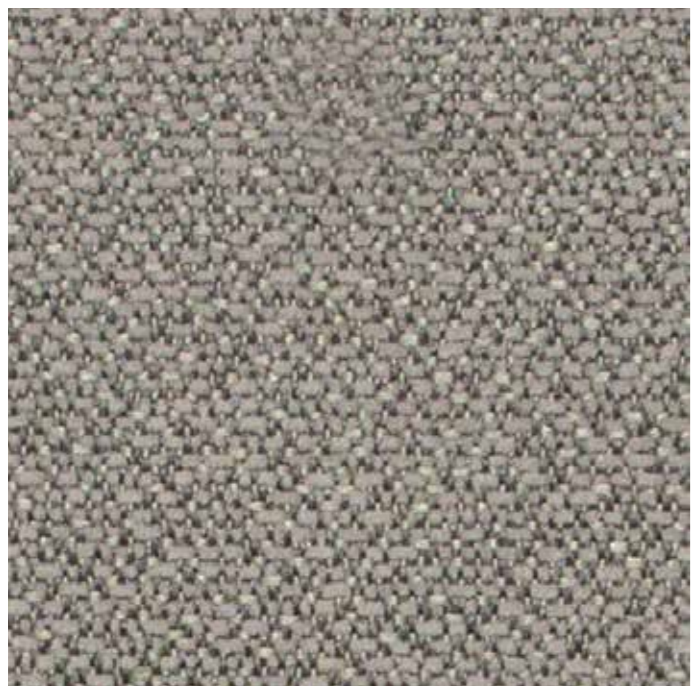
Durham Sand



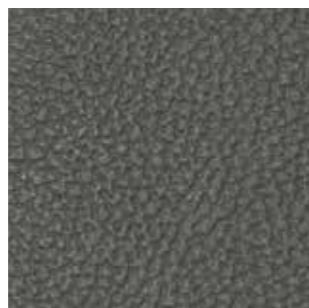
Maranello Savannah



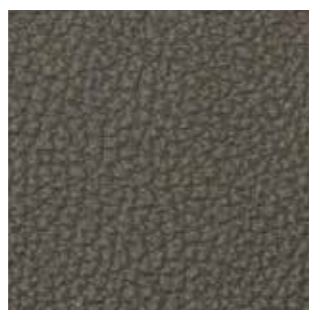
Maranello Pumice



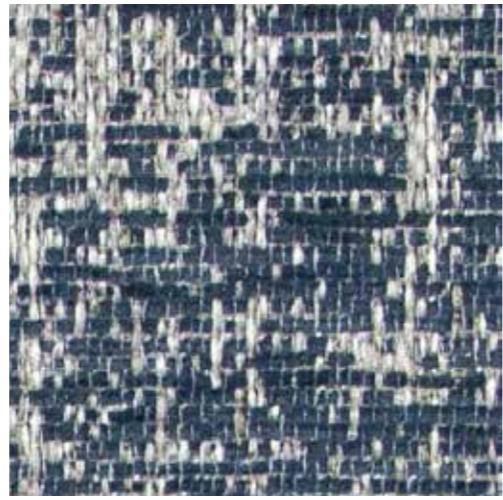
Chester Stone



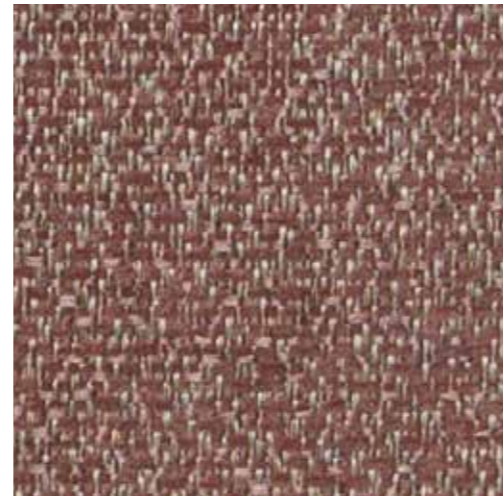
Maranello Stone



Maranello Iguana



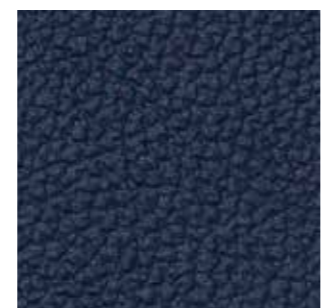
Durham North Sea



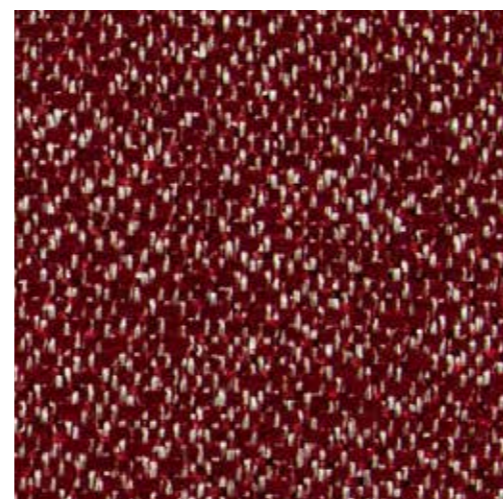
Chester Rose



Chester Navy



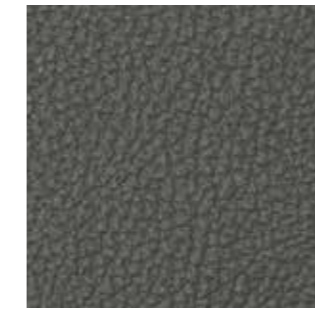
Maranello Regal



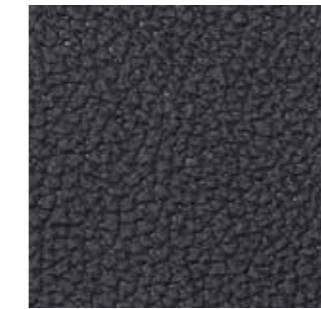
Chester Wine



Chester Charcoal



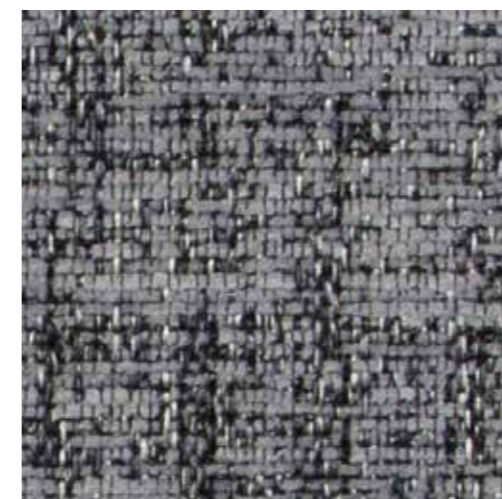
Maranello Stone



Maranello Flint



Chester Cloud



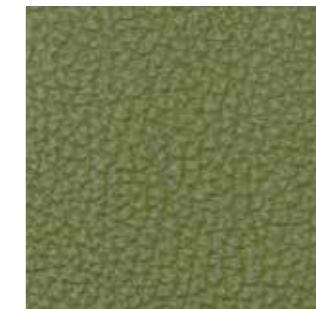
Durham Pewter



Chester Almond



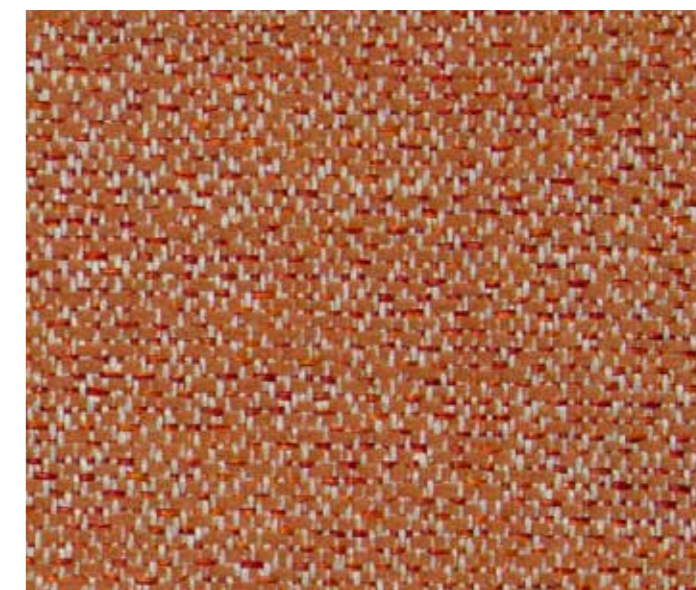
Maranello Tan



Maranello Olive



Chester Moss



Chester Terra



Maranello Tangerine

Chester

Width	138cm
Composition	100% Polyester
Roll size	50m approx.
Weight	538 GLM
Use	Heavy Duty Commercial Upholstery and Healthcare
Abrasion	100,000 Martindale
Flammability	AS1530.3
Light Fastness	5

Durham

Width	138cm
Composition	100% Polyester
Roll size	50m approx.
Weight	538 GLM
Use	Heavy Duty Commercial Upholstery and Healthcare
Abrasion	100,000 Martindale
Flammability	AS1530.3
Light Fastness	5

Fabric Care: Spot clean with water and mild detergent (1% detergent). Do not use solvents.

Colour Variations: All textiles are subject to some colour variation. Fabric supplied to customer order will be within commercial tolerance.

CTA Performance Rating: Tests conducted by independent testing laboratories indicate that CHESTER & DURHAM met or exceeded the performance guidelines for Heavy Duty Commercial Use as determined by the CTA (Commercial Textile Association of Australia and New Zealand).

Maranello

Width	137cm
Composition	100% PVC
Roll size	30m
Weight	716 GSM
Use	Suitable for Heavy Duty Commercial Upholstery and Healthcare
Abrasion	165,000 Martindale
Flammability	AS1530.3
Light Fastness	7.5

Qualities: ANTIMICROBIAL: Sanitised to inhibit growth of bacteria, mould and mildew. EZYCLEAN: Stain resistance finish.

Colour Variations: All textiles are subject to some colour variation. Fabric supplied to customer order will be within commercial tolerance.

CTA Performance Rating: Tests conducted by independent testing laboratories indicate that MARANELLO met or exceeded the performance guidelines for Heavy Duty Commercial Use as determined by the CTA (Commercial Textile Association of Australia and New Zealand).

Fabric Care: GENERAL: Clean using warm soapy water. Dry using a clean, dry cloth. BLEACH: Bleach based hospital cleaning products can be used. SPOT CLEANING: To remove difficult stains, wipe affected area with an alcohol based solution ie. isopropyl alcohol. Note silicone based cleaners should never be used. MARANELLO is Phthalate free. No Formaldehyde, lead, mercury & chromium is used in the manufacturing process.

Colour Matching: Batch to batch variations in shade may occur within commercial tolerances.

AUSTRALIA
 telephone: 1800 173 209
 web: atworkwithcamira.com
 email: sales@atworkwithcamira.com
**at work is a brand of Textilia*

NEW ZEALAND
 telephone: +64 9 302 3182
 web: textilia.co.nz
 email: sales@textilia.co.nz



Commercial Textile Association
of Australia & New Zealand Limited.



Commercial Textile Association
Performance Rating.



Crypton

Crypton

Chester and Durham



Fabric for life's busiest places.